

## STEP 6

Open the cabinet door when finished and take out the models. Finally remember to close the door.



## II. Baking Mode

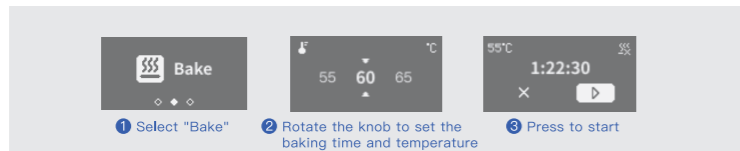
### STEP 1

If baking function is needed, open the door and hang the items in the hole of the rod with hooks, or place them on the turntables, and then close the door to start baking.



### STEP 2

Turn the knob to select "Bake" and press the knob to enter the baking parameter setting page, then you can set the baking time and temperature. After setting, you can press to start.



### STEP 3

Take out the models when finished.



## 5 Cautions



### 01

Do not open the door during curing.



### 02

The temperature of curing/baking process may be high, please do not touch or block the air outlet, and be careful of burns when removing the finished cured/baked parts.



### 03

Fast curing mode can be selected according to the needs of direct curing, or the parts can be cured in water. For underwater curing, you should prepare your own glass container with high light transmission, which will improve the surface quality of the cured parts. It is also necessary to avoid damage to the device due to water spillage inside the device.



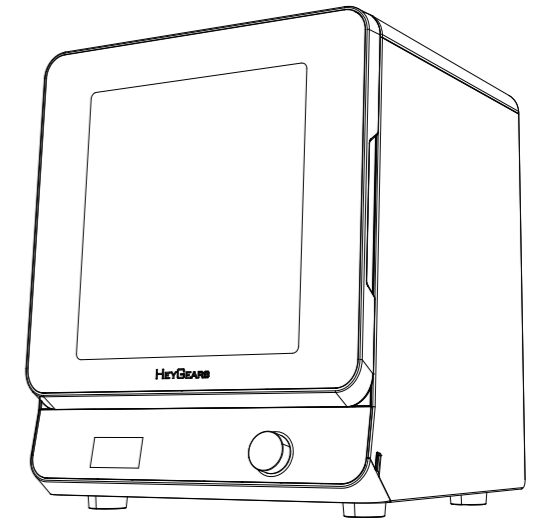
### 04

Do not look directly at the device if there is still residual light when opening the door and removing the parts. It is recommended to wear goggles for operation.



# Cure

Personal Desktop Post Curing Unit



heygears.com

info@heygears.com

Tel: +1 (318) 353-4295 (Global)/ +1 (949) 418-9418 (USA) / +44 148-396-8549 (EU)

USA-17931 Sky Park Circle, Suite E, Irvine, CA, 92614  
CHN-Block B2, 501, 601, Enterprise Accelerator, Kaifa District, Guangzhou City

Follow us @HeyGears



This quick start must be read and understood before operating the machine.

Thank you for choosing HeyGears. **For safety, please contact HeyGears support staff for assistance regarding unpacking and installing the machine.** If you fail to comply with the instructions in this manual, HeyGears will not be liable for the consequential damages unless required by federal and local ordinances.

Please keep this operation manual properly for future reference. The pictures are for reference only and the products are subject to the actual product.

## 1 Items & Parameters



UltraCraft Cure  
X1



Power Cord  
X1



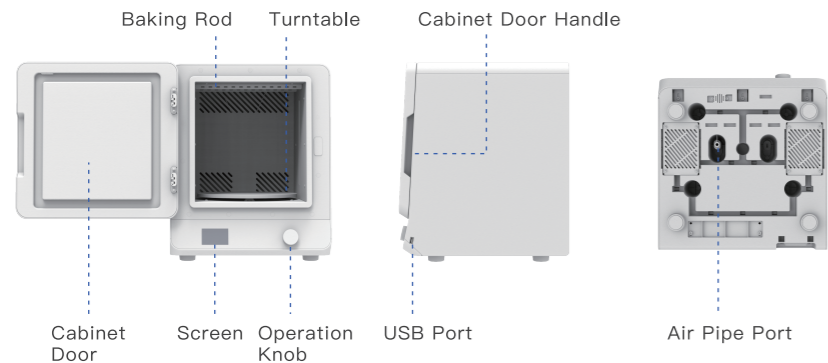
Turntable Base  
X1



Turntable  
X1

Name	UltraCraft Post Curing Unit	Input	100~240 V~ 50/60 Hz
Model	UltraCraft Cure	Weight	12 kg
Size	370*387*456 mm	Power	350 W

## 2 Components



## 3 Installation Requirements



Position the curing unit onto a stable table

100~240 V power socket nearby

Protected from exposure to direct sunlight

Temperature & Humidity Control:

18~25°C <50%

## 4 Operation Steps

### I.Curing Mode

#### STEP 1

Take out the curing unit and turntable, place it on an even and horizontal surface. Install the turntable base and turntable to the shaft location. Take out the power cord supplied in the package, and connect the unit to the power supply as shown in picture. Turn on the power switch, then the screen lights up to indicate that the power is successfully connected.



#### STEP 2

Please download and sign up for BlueprintGo App by scanning the QR code shown right.



Android



iOS

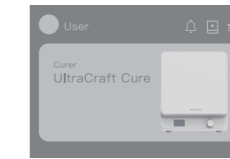
#### STEP 3

Enter the "Setup" menu and select "Wi-Fi Setup". Tap the icon "+" on the top right corner in Blueprint App, and click "Connect Via Bluetooth" to select the corresponding devices in the list, then wait for pairing. After pairing, select the Wi-Fi according to the app instruction, then wait for connection. After connecting to Wi-Fi, select "Back" at the device side, then the network configuration will be finished.

①Enter the "Setup" menu and select "Wi-Fi Setup".



②Tap the icon "+" on the top right corner in Blueprint App and follow its instructions.



Select "Back" at the device side to finish network configuration.



#### STEP 4

Open the cabinet door and place the clean models (Remove supports as required) on the turntable, and then close the door.



#### STEP 5

Rotate the knob and select "Curing" by pressing the knob down to enter jobs list. Rotate the knob to select curing job and press to select curing mode (Quick/High Performance) according to your needs, then rotate the knob to the start button and press down.

